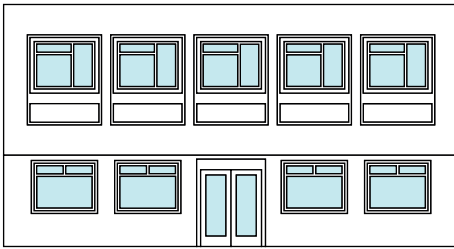
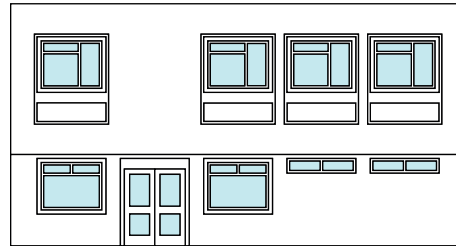


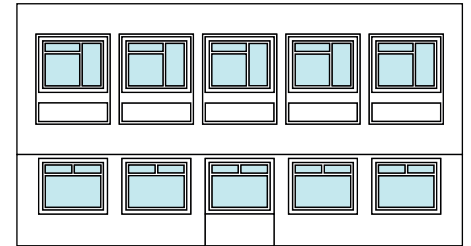
Block A



Block B



Window Infill Option



Tool Check List

Precision Craft Knife
Cutting Mat
Your Preferred Modelling Glue
Tweezers

Fine Tip Applicator
Low-tac Masking Tape
Weights / Clips / Clamps

We recommend:

Reading through the instructions to familiarise yourself with the construction style of the kit before starting the build.

Painting white edges as you remove the components from the sheet to improve the finished look.

Distributing glue evenly across components before bonding.

Applying even pressure across components when bonding them together.

Using low-tac masking tape, clamps and weights to aid the assembly process.

Removing each component as it's required to prevent losing or mixing it up with another component.

How to Remove Components from Sheets:

Components are held in position using score lines.

To remove a component held in by a score line (indicated by a scissor symbol), carefully run the tip of your craft knife through the score line.

Office Block Assembly

Office Block A Components are Labelled in Black. Office Block B Components are Labelled in Red.

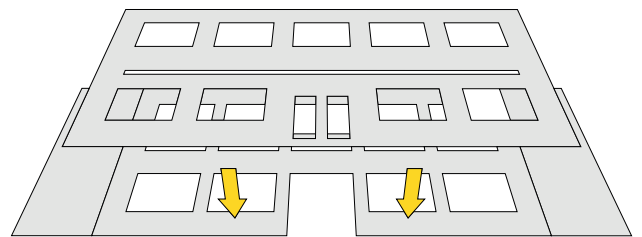
The visuals in this instructional manual are for Office Block A. Although Office Block B is slightly different in appearance, we've designed it to be built the same way for ease.

Kit Customisation

We have included two door options and a window infill with this kit. The standard doors can be found on Inner Wall A. If you wish to replace the standard doors, simply remove them by cutting along the score lines surrounding the doors which have been highlighted in yellow. The new doors can then be fitted a little later in the build.

1. Detach Component A and Inner Wall A.
Remove the excess card from the notch that's been cut into Inner Wall A (this will be used as a guide to position the first floor).

Next, fold the walls along the scored lines of Component A and place it face down on your work surface.



Then, glue Inner Wall A to the inside of Component A.

-  Ensure that there is even spacing around the window openings and the bottom of the walls are flush with one another.

If you've decided to remove the standard front door on Inner Wall A, now is the time to fit one of the alternatives. Simply glue the Alternative Door or Window Infil into the standard doors previous position. To fit Window Infil Part B, turn component A so it's face up and glue into position.

2. Locate the glazing sheet and cut out the windows along the thin outer lines. Then glue each one into position.

Block A will require: Glazing A and B

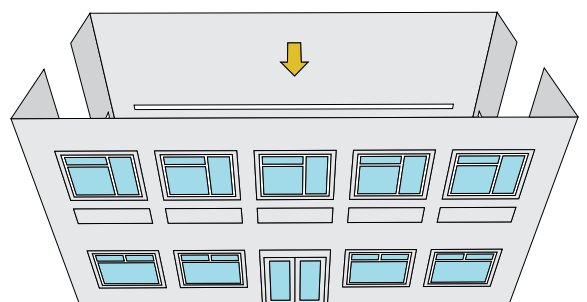
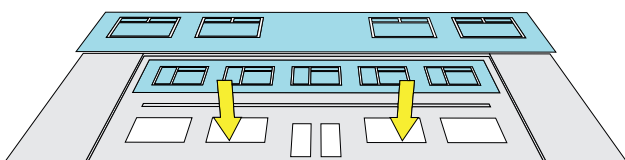
Block B will require: Glazing C and D

(If you've opted to replace the doors with window infils, use Glazing E).

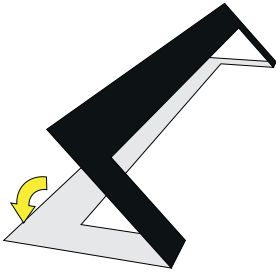
3. Detach Inner Wall B from the main sheet and remove the excess card from the notches that have been cut into the walls.

Then, fold the side walls along the score line and glue to the inside of Component A.

-  The side walls of component A should overhang the back wall by 0.5-1mm.

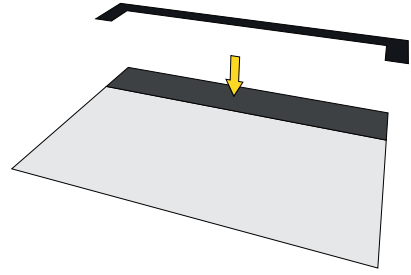


4. Detach the Roof Kerb. Then fold the component along the score line and glue together.



5. Detach the Back Wall & Roof component and lay it face up on your work surface.

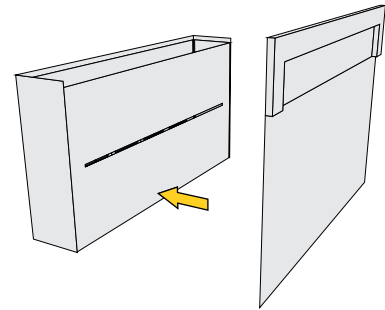
Then, glue the kerb to the roof.



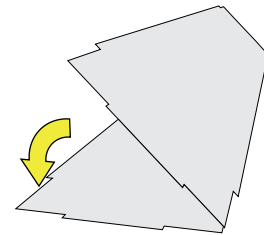
6. Glue the Back Wall to the Inner Wall B, ensuring the bottom of each wall are aligned.

The Back Wall should sit flush between the two outer side walls.


Don't glue the roof to the walls just yet as you will need access to the inside to position the first floor.



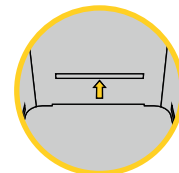
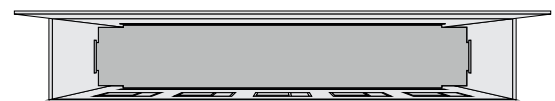
7. Detach the First Floor. Fold it along the score line and glue together.



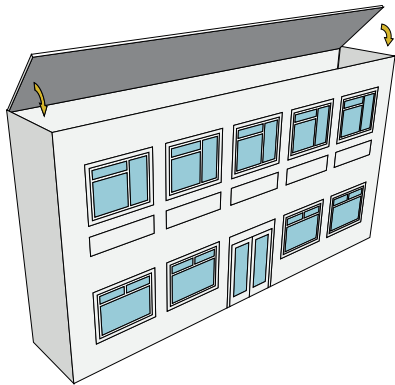
8. Locate the notches on the inner walls (x4) and apply glue inside each one.

-  Carefully lower the First Floor into the building, until the tabs on the floor align with the notches on the wall.

Apply even pressure from the outside until the glue has semi-cured.

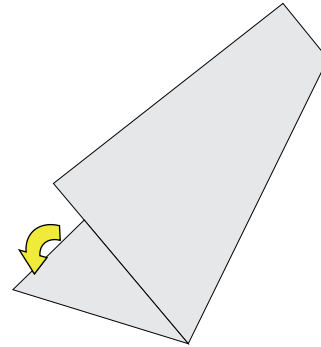


9. Apply a bead of glue around the outer side of the roof kerb. Then, carefully position it on the inside of the wall, ensuring that the roof cap is flush with the top of the wall.



10. Detach the Ground Floor.

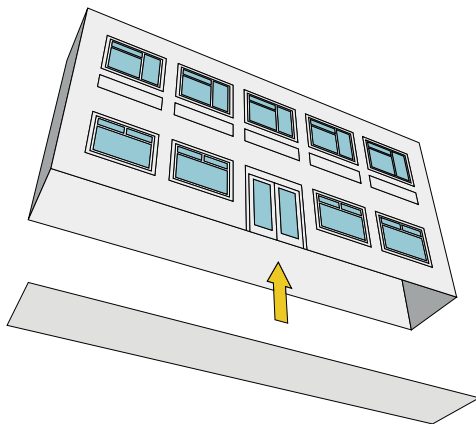
Fold the component along the score line and glue together.



11. Apply a bead of glue around the edge of the floor and glue it into position.

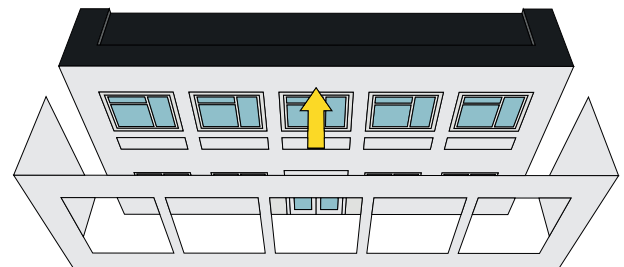
Ensure you take your time with this step.

Applying even pressure where the floor meets the wall until it's semi-cured will ensure a firm hold.



12. Detach the Cladding and fold it along the score lines.

Then, glue the Cladding to the building.



You have now completed the TT Scale Low Relief 1970's Office Block. We hope you enjoyed and successfully built the kit! To view our other card kits, more products and find your local stockist, visit www.atdmodels.co.uk

We'd love to see photos of your finished models. Please send them to enquiries@atdmodels.co.uk for a chance to be featured on our social media pages.